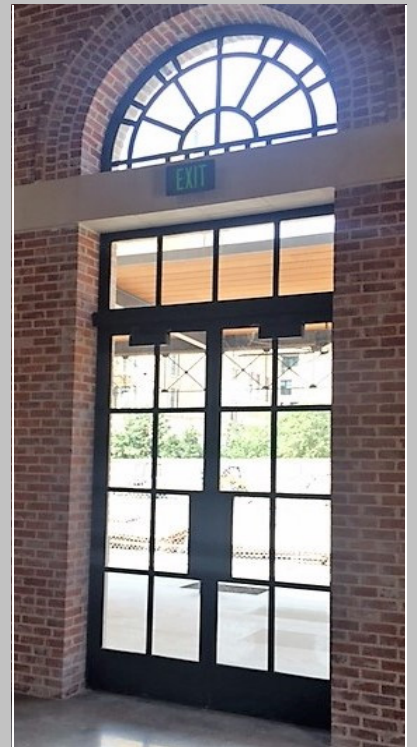


Coast to Coast Manufacturing

STEEL WINDOW and DOOR SYSTEMS



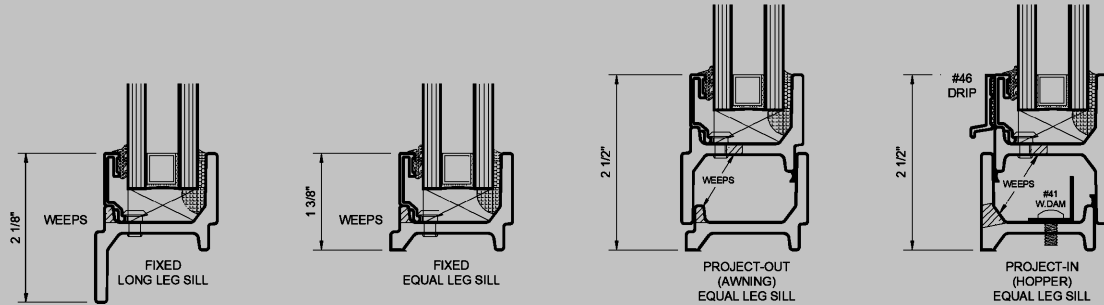
1750 SERIES

Casement, Awning, Hopper, Fixed or Combination Windows

Equal Leg, Short Equal Leg, Long Leg, Standard Nail-Fin Framing

Insulated or Single Glazing — Rectangular or Sloped Glazing Beads

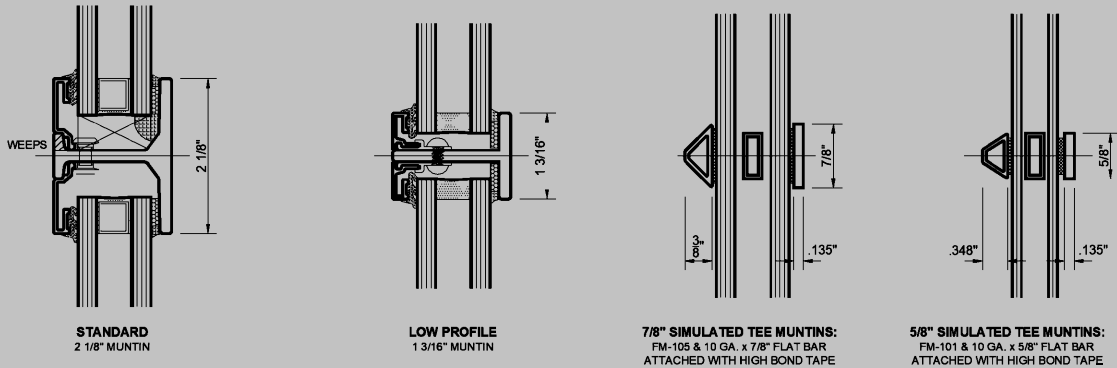
True or Simulated Muntins — Insect Screens with Aluminum Wire or Fiberglass Mesh



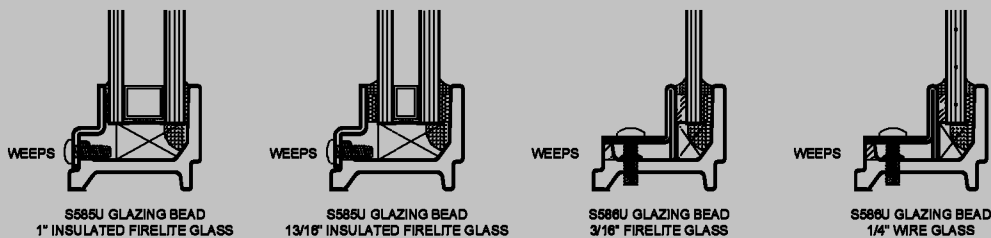
NOTE: 1" Insulated glass units are shown.

Other glass thicknesses are available.

Muntin Options:



Fire-Rated Glazing:

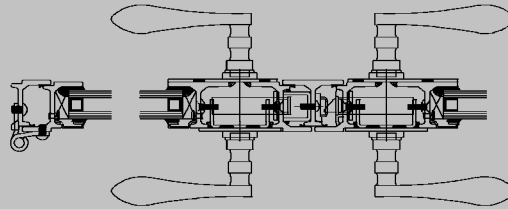
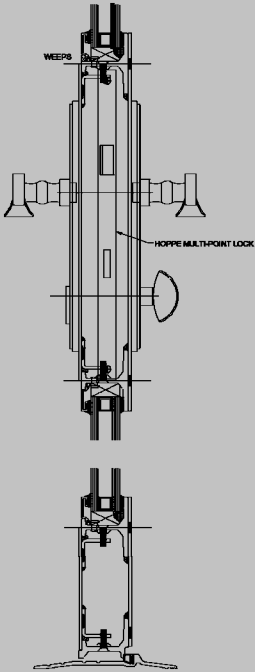


1750 SERIES WINDOW PERFORMANCE TABLE

<u>RATING</u>	<u>CONFIGURATION</u>	<u>TEST SIZE</u>	<u>AIR</u>	<u>WATER</u>	<u>STRUCTURAL</u>	<u>Underwriters Label</u>
AW65	Awning (Project-Out)	60" x 36"	6.24 psf	12.0 psf	97.5 psf	45 Minute Rated (3/4 Hour)
AW50	Hopper (Project-In)	60" x 36"	6.24 psf	10.0 psf	75 psf	45 Minute Rated (3/4 Hour)
AW65	Casement (Outswing)	36" x 60"	6.24 psf	12.0 psf	97.5 psf	45 Minute Rated (3/4 Hour)

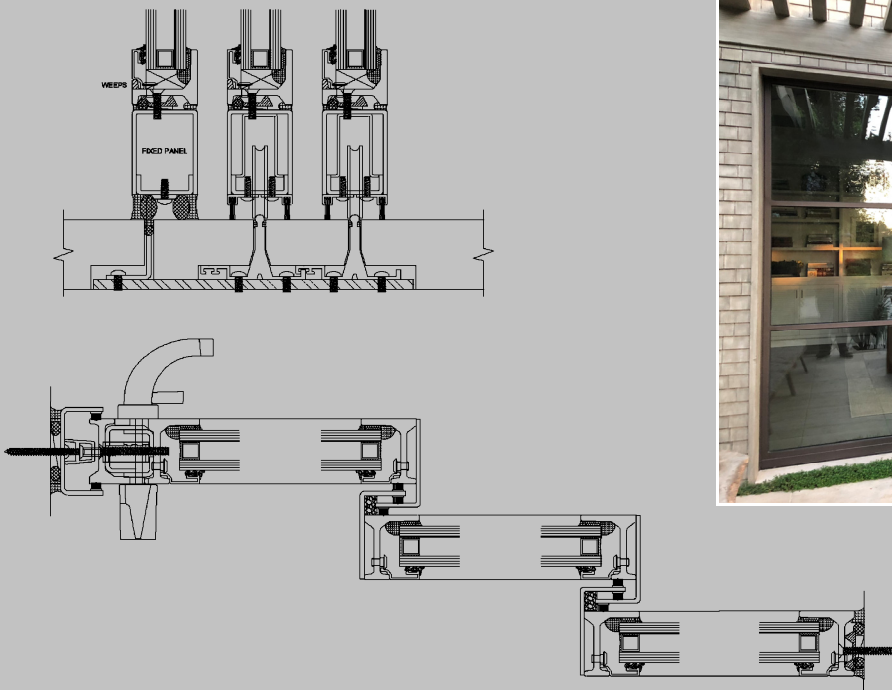
1750 SERIES HINGED STEEL DOORS

Equal Leg or Nail-Fin Framing — Insulated or Non-Insulated Bead Glazing
True Muntins or Simulated Muntins — Standard or ADA Thresholds Available



1750 SERIES SLIDING STEEL DOORS

Equal Leg or Nail-Fin Framing — Insulated or Non-Insulated Bead Glazing
True Muntins or Simulated Muntins — Insect Screens with Aluminum or Fiber Mesh
Standard or ADA Thresholds available — Heavy Duty Stainless Steel Rollers and Patio Lock



1750 Series Specifications:

General: Windows and Door are Series 1750 as manufactured by Coast To Coast Manufacturing. They Include hardware and related items as described and shown on the approved Shop Drawings.

Material: Sections are hot rolled steel. (ST37-2) Frames and ventilator sections shall have weathering baffles rolled integrally in the bar profiles to provide parallel double contact surfaces around the perimeter of each ventilator when closed. Windows and Doors are designed for inside or outside glazing using snap-in aluminum extruded bead. (Brake formed steel glazing beads at fire-rated windows)

Construction: Corners of frames and ventilators shall be coped or mitered and electrically welded; exposed welds shall be dressed smooth. Ventilators shall be continuously double weatherstripped around the perimeter of the vent except at pressure equalization slots.

Glazing: At frames and ventilators, glazing legs are 3/4" high. Glazing beads are extruded, snap-in type, no less than .050" thick and accommodate up to and including 1 1/4" glass, panels or louvers.

Finish: After fabrication, windows, doors and mullions are sand blasted for uniformity and then receive an electro-galvanized coating. Following galvanizing, they are phosphate treated in a multiple stage process, as a preparation for receiving paint. Following pretreatment, they are prime painted and then given a standard color coat of acrylic polyurethane paint as selected by the Architect/Owner.

Window Hardware: Coast To Coast Mfg.'s standard locking hardware and hinges are securely fastened to the frame and ventilator. Standard locking hardware consists of cam locking handles cast of white bronze. Other hardware options are available.

Hinged Door Hardware: Coast To Coast Mfg.'s standard locking hardware and hinges are securely fastened to the frame and door leaf. Standard hardware consists of Half mortise butt hinges and multi-point locking. Other hardware options are available.

Sliding Door Hardware: Coast To Coast Mfg.'s standard locking hardware and rollers are securely fastened to the frame and door panels. Standard hardware consists of heavy duty stainless steel rollers and multi-point locking. Other hardware options are available.

Screens: Optional insect screens of extruded aluminum frames, securely joined at corners and finished to match window frames. Standard screen cloth is 18 x 16 charcoal fiberglass mesh. Standard wickets and attachment clips are provided as required.

Installation: Window and Door frames must be installed plumb, level and true without springing or twisting, and be securely fastened in place in accordance with the approved Shop Drawings and applicable building codes. Frames are to be caulked with a suitable compound; using appropriate joint design to accomplish a thoroughly water-tight installation as per the approved Shop Drawing details. Architectural waterproofing instructions would take precedence.



Coast to Coast Manufacturing

3087 12TH STREET
RIVERSIDE, CA 92507

Phone (909) 798-5024
FAX (951) 657-9661

www.CoastToCoastMfg.com

email: info@CoastToCoastMfg.com

A division of Stylex Windows and Doors