



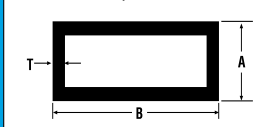
Prefinished Aluminum Sheet 040 x 48"
 POPULAR SIZES (SHEETS PER 500 lb CASE)
 48" x 96" (28); 48" x 120" (23); 48" x 144" (19)

| |
|--|
| SAF 201, Clear Anodized |
| SAF 244, Dk Bronze Anodized |
| SAF 245, Extra Dk Bronze Anodized |
| SAF 246 Black Anodized |
| SAF 434, Dk Statuary Bronze Fluorocarbon |
| SAF 434, Classic Bronze/Black Fluorocarbon 2-sides |
| SAF 434, White Fluorocarbon |

Stock Aluminum Sheet 5005 AQ

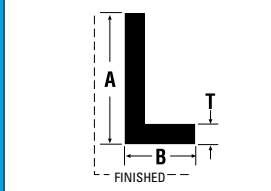
| Mill Finish Stock Sizes | Lbs./Sq. Ft. | Lbs./Sheet | Sheets/Case 500 lbs |
|-------------------------|--------------|------------|---------------------|
| .032 x 48 x 96 | 0.452 | 14.464 | 35 |
| .032 x 48 x 120 | | 18.090 | 28 |
| .040 x 36 x 96 | | 13.536 | 37 |
| .040 x 36 x 120 | | 16.920 | 30 |
| .040 x 36 x 144 | | 20.304 | 25 |
| .040 x 48 x 96 | 0.564 | 18.048 | 28 |
| .040 x 48 x 120 | | 22.560 | 23 |
| .040 x 48 x 144 | | 27.072 | 19 |
| .050 x 48 x 96 | | 22.592 | 23 |
| .050 x 48 x 120 | 0.706 | 28.240 | 18 |
| .050 x 48 x 144 | | 33.888 | 15 |
| .063 x 36 x 96 | | 21.336 | 24 |
| .063 x 36 x 120 | | 26.670 | 19 |
| .063 x 36 x 144 | | 32.004 | 16 |
| .063 x 48 x 96 | 0.889 | 28.448 | 18 |
| .063 x 48 x 120 | | 35.560 | 15 |
| .063 x 48 x 144 | | 42.672 | 12 |
| .063 x 60 x 120 | | 44.000 | 12 |
| .063 x 60 x 144 | | 53.340 | 10 |
| .080 x 48 x 96 | | 36.064 | 14 |
| .080 x 48 x 120 | 1.127 | 45.080 | 12 |
| .080 x 48 x 144 | | 54.096 | 10 |
| .090 x 36 x 96 | | 30.576 | 17 |
| .090 x 36 x 120 | | 38.220 | 14 |
| .090 x 36 x 144 | | 45.864 | 11 |
| .090 x 48 x 96 | 1.274 | 40.768 | 13 |
| .090 x 48 x 120 | | 50.960 | 10 |
| .090 x 48 x 144 | | 61.152 | 9 |
| .125 x 36 x 96 | | 42.336 | 12 |
| .125 x 36 x 120 | | 52.920 | 10 |
| .125 x 36 x 144 | | 63.504 | 8 |
| .125 x 48 x 96 | | 56.448 | 9 |
| .125 x 48 x 120 | 1.764 | 70.560 | 8 |
| .125 x 48 x 144 | | 84.672 | 6 |
| .125 x 48 x 168 | | 98.784 | 6 |
| .125 x 60 x 96 | | 70.560 | 8 |
| .125 x 60 x 120 | | 88.200 | 6 |
| .125 x 60 x 144 | | 105.840 | 5 |

RECTANGULAR TUBING Sharp Corners



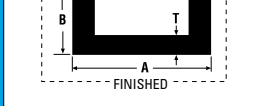
| Sect. No. | DIMENSIONS | | | Wght per Lgth | |
|-----------|------------|--------|------|---------------|--------|
| | A | B | T | | |
| t121 | 1/2" | 1" | 1/8" | 21.08 | 8.075 |
| t34112 | 3/4" | 1-1/2" | 1/8" | 24.08 | 14.546 |
| t1112 | 1" | 1-1/2" | 1/8" | 24.08 | 16.304 |
| t12 | 1" | 2" | 1/8" | 24.08 | 20.109 |
| t13 | 1" | 3" | 1/8" | 24.08 | 27.117 |
| t14 | 1" | 4" | 1/8" | 24.08 | 34.342 |
| t16 | 1" | 6" | 1/8" | 24.08 | 49.659 |
| t11421 | 1-1/4" | 2-1/2" | 1/8" | 24.08 | 25.287 |
| t1122 | 1-1/2" | 2" | 1/8" | 24.08 | 23.544 |
| t1343 | 1-3/4" | 3" | 1/8" | 24.08 | 32.247 |
| t79839 | 1-3/4" | 4" | 1/8" | 24.08 | 39.737 |
| t13441 | 1-3/4" | 4-1/2" | 1/8" | 24.08 | 43.349 |
| t1345 | 1-3/4" | 5" | 1/8" | 24.08 | 47.058 |
| t23 | 2" | 3" | 1/8" | 24.08 | 34.342 |
| t24 | 2" | 4" | 1/8" | 24.08 | 41.567 |
| t2412 | 2" | 4-1/2" | 1/8" | 24.08 | 45.180 |
| t25 | 2" | 5" | 1/8" | 24.08 | 48.744 |
| t26 | 2" | 6" | 1/8" | 24.08 | 56.017 |
| t34 | 3" | 4" | 1/8" | 24.08 | 48.792 |
| t36 | 3" | 6" | 1/8" | 24.08 | 63.218 |
| t46 | 4" | 6" | 1/8" | 24.08 | 70.804 |

ANGLES - UNEQUAL LEGS Sharp Corners



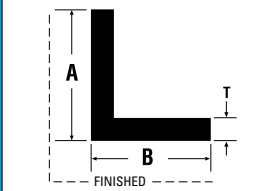
| Sect. No. | DIMENSIONS | | | | Wght per Lgth |
|-----------|------------|--------|-------|-------|---------------|
| | A | B | T | Lgth | |
| 1944 | 3/4" | 3/8" | 3/32" | 16' | 1.856 |
| 13754 | 3/4" | 1/2" | 1/16" | 16' | 1.424 |
| 1943 | 1" | 1/2" | 3/32" | 16' | 2.528 |
| 7201 | 1" | 1/2" | 1/8" | 16' | 3.296 |
| 7385 | 1" | 3/4" | 1/8" | 16' | 3.904 |
| 2927 | 1" | 4" | 1/8" | 16' | 11.696 |
| 895 | 1-1/4" | 1/2" | 1/8" | 16' | 3.904 |
| 8392 | 1-1/2" | 1/2" | 1/8" | 16' | 4.496 |
| 5137 | 1-1/2" | 3/4" | 1/8" | 16' | 5.104 |
| 7613 | 1-1/2" | 1" | 1/8" | 16' | 5.696 |
| 870701 | 1-3/4" | 7/8" | 1/16" | 16' | 3.056 |
| 158262 | 1-3/4" | 1" | 1/8" | 16' | 6.304 |
| 7257 | 1-3/4" | 1-5/8" | 1/16" | 16' | 3.824 |
| 205621 | 2" | 3/4" | 1/8" | 16' | 6.304 |
| 6844 | 2" | 1" | 1/8" | 16' | 6.896 |
| 17338 | 2" | 1-1/2" | 1/8" | 16' | 8.096 |
| 205701 | 2" | 4" | 1/8" | 24'1" | 21.217 |
| 205631 | 2-1/2" | 1" | 1/8" | 16' | 8.096 |
| 205641 | 2-1/2" | 1-1/2" | 1/8" | 16' | 9.296 |
| 7035 | 3" | 1" | 1/8" | 16' | 9.296 |
| 205661 | 3" | 2" | 1/8" | 16' | 11.696 |
| 6746 | 3-1/2" | 1-1/4" | 1/8" | 16' | 11.104 |

CHANNELS



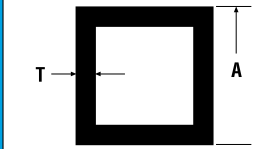
| Sect. No. | DIMENSIONS | | | | Wght per Lgth |
|-----------|------------|--------|-------|--------|---------------|
| | A | B | T | Lgth | |
| 87754 | 1/2" | 1/2" | 1/16" | 24.083 | 2.456 |
| 2749 | 1/2" | 1/2" | 3/32" | 16.000 | 2.368 |
| 8997 | 1/2" | 3/4" | 1/8" | 16.000 | 4.208 |
| 4533 | 5/8" | 5/8" | 1/8" | 16.000 | 3.904 |
| 2715 | 3/4" | 3/8" | 1/8" | 16.000 | 2.992 |
| 2169 | 3/4" | 3/4" | 1/16" | 16.000 | 2.528 |
| 3547 | 3/4" | 3/4" | 1/8" | 16.000 | 4.800 |
| 25755 | 3/4" | 1-1/2" | 1/8" | 16.000 | 8.416 |
| 1940 | 1" | 1/2" | 1/8" | 20.000 | 5.260 |
| 3978 | 1" | 3/4" | 1/8" | 16.000 | 5.392 |
| 7484 | 1" | 1" | 1/8" | 16.000 | 6.608 |
| 7485 | 1" | 2" | 1/8" | 16.000 | 11.408 |
| 4286 | 1-1/4" | 1/2" | 1/8" | 20.000 | 6.000 |
| 87071 | 1-1/4" | 3/4" | 1/8" | 20.000 | 7.480 |
| 4542 | 1-1/4" | 1-1/4" | 1/8" | 16.000 | 8.416 |
| 4300 | 1-1/2" | 1/2" | 1/8" | 20.000 | 6.740 |
| 4301 | 1-1/2" | 3/4" | 1/8" | 16.000 | 6.608 |
| 3466 | 1-1/2" | 1-1/2" | 1/8" | 21.000 | 13.377 |
| 2105 | 1-3/4" | 3/4" | 1/8" | 16.000 | 7.200 |
| 5714 | 1-3/4" | 1" | 1/8" | 16.000 | 8.384 |
| 2388 | 2" | 1/2" | 1/8" | 16.000 | 6.608 |
| 5527 | 2" | 1" | 1/8" | 20.000 | 11.260 |
| 892 | 2" | 2" | 1/4" | 22.000 | 36.300 |
| 2748 | 2-1/4" | 7/8" | 1/8" | 16.000 | 9.008 |
| 40517 | 2-1/2" | 1-1/2" | 1/8" | 22.000 | 17.314 |
| 6594 | 3" | 1/2" | 1/8" | 16.000 | 9.008 |
| 3776 | 3" | 1" | 1/8" | 16.000 | 11.408 |
| 21410 | 4" | 1-3/4" | 1/8" | 24.000 | 26.376 |
| 17146 | 5" | 2" | 3/16" | 16.000 | 31.400 |

ANGLES - EQUAL LEGS Sharp Corners



| Sect. No. | DIMENSIONS | | | | Wght per Lgth |
|-----------|------------|--------|-------|------|---------------|
| | A | B | T | Lgth | |
| 1312 | 1/2" | 1/2" | 1/16" | 16' | 1.120 |
| 79h | 1/2" | 1/2" | 1/8" | 16' | 2.096 |
| 79o | 5/8" | 5/8" | 1/8" | 16' | 2.688 |
| 472 | 3/4" | 3/4" | 1/16" | 16' | 1.728 |
| 79a | 3/4" | 3/4" | 1/8" | 16' | 3.296 |
| 79m | 1" | 1" | 1/16" | 16' | 2.320 |
| 79g | 1" | 1" | 1/8" | 16' | 4.496 |
| 79b | 1" | 1" | 3/16" | 16' | 6.528 |
| 79i | 1-1/4" | 1-1/4" | 1/8" | 16' | 5.696 |
| 79p | 1-1/4" | 1-1/4" | 3/16" | 16' | 8.304 |
| 79v | 1-1/2" | 1-1/2" | 1/8" | 16' | 6.896 |
| 79n | 1-1/2" | 1-1/2" | 3/16" | 16' | 10.128 |
| 79y | 1-3/4" | 1-3/4" | 1/8" | 16' | 8.096 |
| 1071 | 2" | 2" | 1/16" | 16' | 4.688 |
| 79x | 2" | 2" | 1/8" | 16' | 9.296 |
| 79e | 2" | 2" | 1/4" | 16' | 17.984 |
| 79xx | 2-1/2" | 2-1/2" | 1/8" | 16' | 11.696 |
| 79yy | 3" | 3" | 1/8" | 16' | 14.096 |
| 79nn | 3" | 3" | 3/16" | 16' | 20.928 |
| 791 | 4" | 4" | 1/8" | 16' | 18.896 |

SQUARE TUBING Sharp Corners



| Sect. No. | DIMENSIONS | | | Wght per Lgth |
|-----------|------------|-------|--------|---------------|
| | A | T | Lgth | |
| st3416 | 3/4" | 1/16" | 24.083 | 4.937 |
| st34 | 3/4" | 1/8" | 24.083 | 9.055 |
| st116 | 1" | 1/16" | 24.083 | 6.743 |
| st1 | 1" | 1/8" | 24.083 | 12.668 |
| st114 | 1-1/4" | 1/8" | 24.083 | 16.280 |
| st112 | 1-1/2" | 1/8" | 24.083 | 19.868 |
| st134 | 1-3/4" | 1/8" | 24.083 | 23.457 |
| st2 | 2" | 1/8" | 24.083 | 27.117 |
| st3 | 3" | 1/8" | 24.083 | 41.567 |
| st4 | 4" | 1/8" | 24.083 | 56.402 |
| st6 | 6" | 1/8" | 24.083 | 84.893 |

*All SAF extrusions are 6063T5 alloy (except drawn round telescoping tube 6063-T832 alloy, and structural tee 853D 6061 alloy).

WE PAY FREIGHT ON ALL SHEET & EXTRUSION ORDERS OVER 100 LBS. • NO SURCHARGES • NO SKID CHARGES

ASK ABOUT: ✓ NEXT-DAY-OUT ANODIZING SERVICES
 ✓ 3-Day Out Painted Extrusions for stock points
 ✓ Panels & Panel Extrusions

Call the contractor's choice for architectural aluminum in North America... 800-241-7429



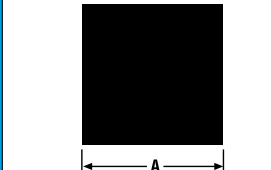
Metals Distribution, Finishing and Fabrication • Order online at: www.saf.com
 Call SAF ATLANTA: 800-241-7429 • Telephone 404-355-1560 • FAX 404-350-0581 • sales@saf.com
 Call SAF WEST: 866-660-6627 • Telephone 530-244-7518 • FAX 530-244-7830 • sales@saf.com

RECTANGULAR BAR Sharp Corners



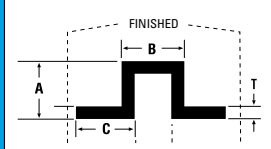
| Sect. No. | DIMENSIONS | | | Wght per Lgth |
|-----------|------------|--------|------|---------------|
| | A | B | Lgth | |
| b1812 | 1/8" | 1/2" | 16' | 1.200 |
| b1834 | 1/8" | 3/4" | 16' | 1.808 |
| b181 | 1/8" | 1" | 16' | 2.400 |
| b18118 | 1/8" | 1-1/8" | 16' | 2.704 |
| b18114 | 1/8" | 1-1/4" | 16' | 2.992 |
| b18112 | 1/8" | 1-1/2" | 16' | 3.600 |
| b18134 | 1/8" | 1-3/4" | 16' | 4.208 |
| b182 | 1/8" | 2" | 16' | 4.800 |
| b18212 | 1/8" | 2-1/2" | 16' | 6.016 |
| b31612 | 3/16" | 1/2" | 16' | 1.808 |
| b3161 | 3/16" | 1" | 16' | 3.616 |
| b1412 | 1/4" | 1/2" | 16' | 2.400 |
| b1434 | 1/4" | 3/4" | 16' | 3.600 |
| b141 | 1/4" | 1" | 16' | 4.800 |
| b14114 | 1/4" | 1-1/4" | 16' | 6.016 |
| b14112 | 1/4" | 1-1/2" | 16' | 7.200 |
| b14134 | 1/4" | 1-3/4" | 16' | 8.416 |
| b142 | 1/4" | 2" | 16' | 9.600 |
| b14212 | 1/4" | 2-1/2" | 16' | 12.000 |
| b143 | 1/4" | 3" | 16' | 14.400 |
| b381 | 3/8" | 1" | 16' | 7.200 |
| b38114 | 3/8" | 1-1/4" | 16' | 9.024 |
| b38112 | 3/8" | 1-1/2" | 16' | 10.800 |
| b382 | 3/8" | 2" | 16' | 14.400 |
| b1234 | 1/2" | 3/4" | 16' | 7.200 |
| b121 | 1/2" | 1" | 16' | 9.600 |
| b12114 | 1/2" | 1-1/4" | 16' | 12.000 |
| b12112 | 1/2" | 1-1/2" | 16' | 14.400 |
| b122 | 1/2" | 2" | 16' | 19.200 |
| b123 | 1/2" | 3" | 16' | 28.800 |
| b12 | 1" | 2" | 16' | 38.400 |

SQUARE BAR Sharp Corners



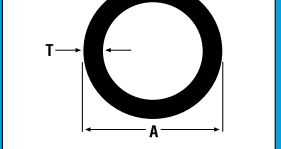
| Sect. No. | DIMENSIONS | | Wght per Lgth |
|-----------|------------|------|---------------|
| | A | Lgth | |
| sb12 | 1/2" | 16' | 4.800 |
| sb34 | 3/4" | 16' | 10.800 |

HAT SECTION



| Sect. No. | DIMENSIONS | | | | Wght per Lgth | |
|-----------|------------|----|------|------|---------------|--------|
| | A | B | C | T | | |
| 4370 | 2" | 1" | 5/8" | 1/8" | 16' | 12.912 |

ROUND TUBE



| Sect. No. | DIMENSIONS | | | Wght per Lgth |
|-----------|------------|-------|------|---------------|
| | A | T | Lgth | |
| rt116 | 1" | 1/16" | 24' | 5.280 |
| rt112 | 1-1/2" | 1/8" | 24' | 15.552 |
| rt2 | 2" | 1/8" | 24' | 21.192 |

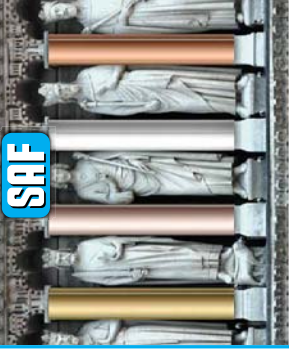


InSPIREing fabrication.

The "Spire" of the inspirational Maritime Corps Museum has 347 unique tapered panels. Each one was programmed into our punch press, then break formed or welded & polished before careful packaging & timely shipping. They arrived on time for successful installation before the facility's grand opening. Ask about how we can meet your next project sheet fabrication & finishing needs... Call 1-800-241-7429 or visit www.saf.com

High Quality Aluminum Extrusion Technology

Tell your friends we do column covers & panels, too.



Any metal, ACM, color... custom or in-stock panels & shapes.
Call 1-800-241-7429 or visit www.saf.com



1581 Huber Street, N.W.
Atlanta, GA 30318

Order online at www.saf.com

Return Service Requested

*With our compliments...
Our latest version SAF Aluminum Extrusion & Sheet
Quick Reference Guide Poster*

Popular ALUMINUM EXTRUSIONS & SHEET GUIDE VER. 8

FOR A FULL PRODUCT LISTING & ORDERING: visit www.SAF.com. Or CALL 800-241-7429.

*It's quick, easy, and 24/7... Simply point your browser to the
SAF Aluminum Extrusion & Sheet store:*

www.saf.com



HERES YOUR CHANCE...

Wish to be added to SAF's mail list? Have your record updated? Or, removed :-)

Call 1-800-241-7429, or copy then FAX this form to 1-404-350-0581.

Or, simply point your browser to:

www.saf.com/optin

and complete your request.

Name/Title: _____
Company/Dept: _____
Address 1: _____
Address 2: _____
City, State, ZIP: _____ FAX: _____
Telephone: _____
Email: _____

Comments, or instructions: _____